



ADGUARD

Edge Protection Panel System

- Safeguard individuals from potential falling from height at construction site
- Design to comply with AS/NZS 4994.1 standard
- Patent application number 2022900488
- Durable product

Benefits

Flexible height option

1m, 1.2m, 1.5m, 2m, 3m to choose

Fast installation

Lightweight, adjustable angles and distances, plus fewer bolts, save time during installation

Advertisement Spot

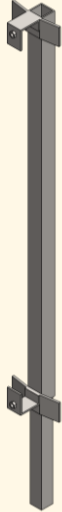
Tailor-made paint option for panel advertising



COMPONENTS



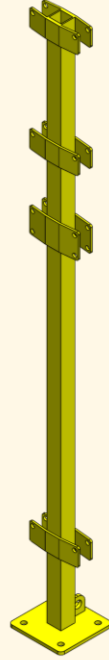
0.8m
Extension
Post 3.5kg



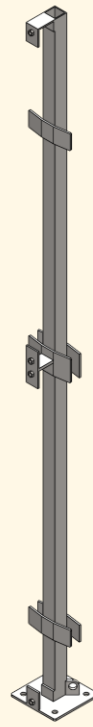
1m
Extension
Post 5.3kg



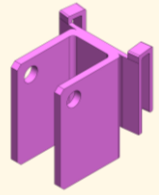
1.2m Post
7.5kg



1.5m Post
9kg



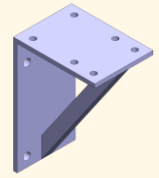
2m Post
10.2kg



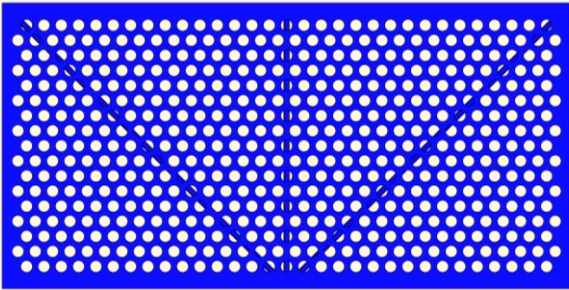
Return clip
0.4kg



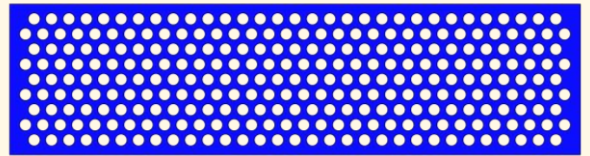
Locking pin
0.06kg



Wall Bracket
6.3kg



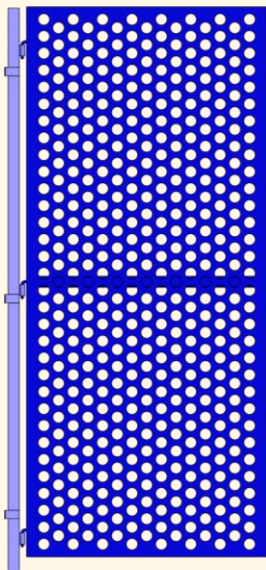
Panel 1m height, 2m length (9.6kg)
1m and 0.5m length options available



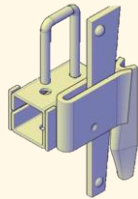
Panel 0.5m high 4.8kg



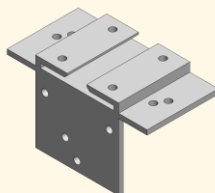
Handrail 2m (2.6kg)
1m, 0.5m options available



Door set

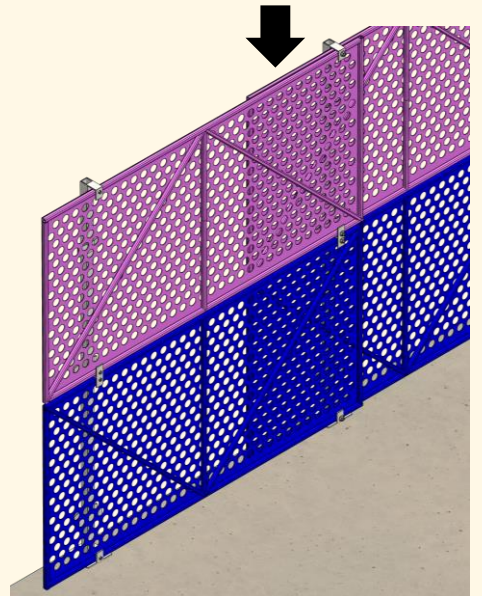


Sheet Piling Bracket
0.8kg

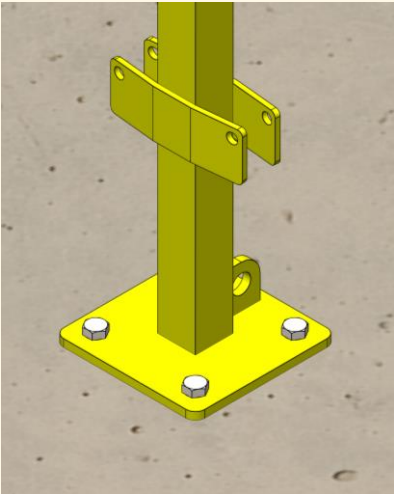


Hop Bracket 6.9kg

Post allows sliding and overlapping mesh panel on guide rails.



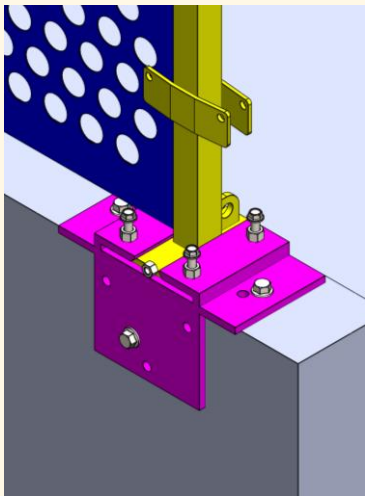
INSTALLATION



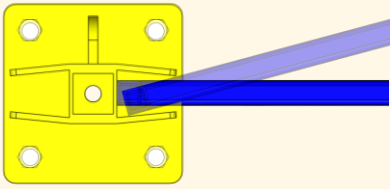
Bolt on ground



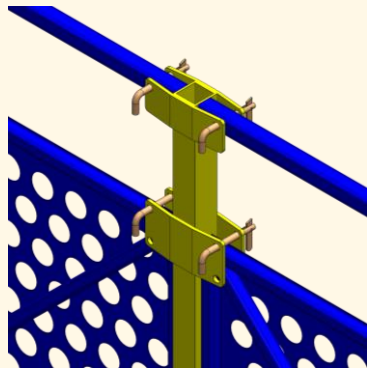
Bolt on side wall



Bolt on hop top



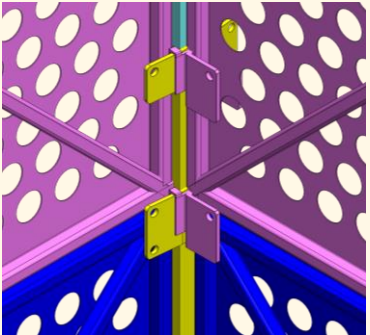
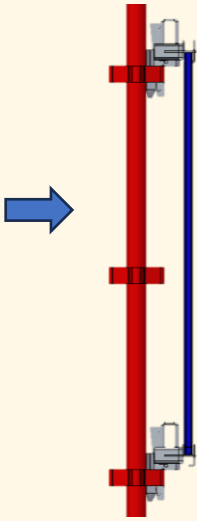
Catering adjustments up to ~20°



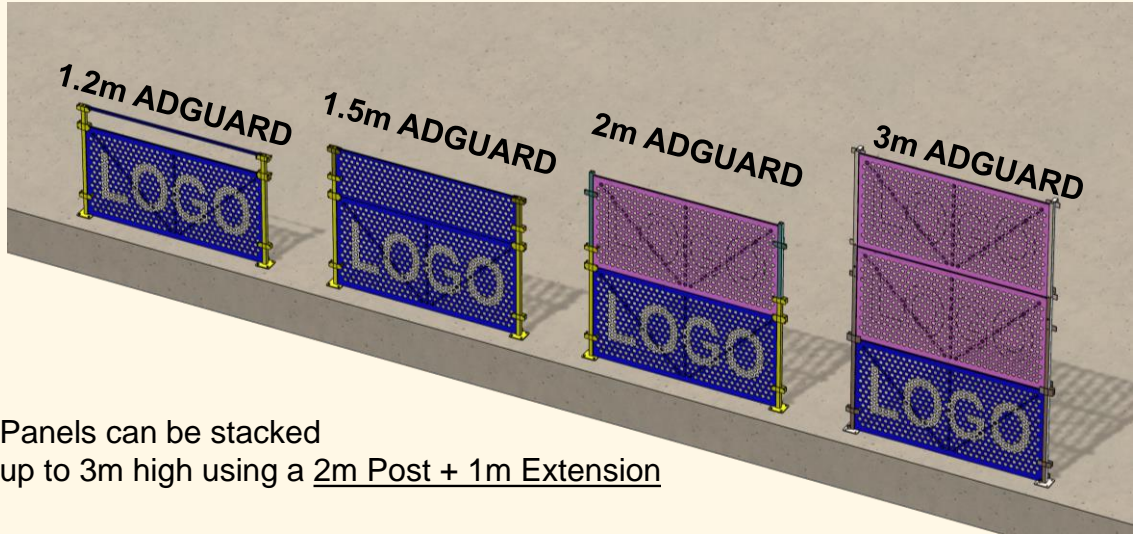
Toggle Pin lock



Clamp on sheet pile



Return clips



Panels can be stacked up to 3m high using a 2m Post + 1m Extension

Applications

Used on timber structure & advertising on panels)

1.2m for building pit



Installed on rooftop hop

Walkway at Burwood Station (steel structure)

Crane Protection with door

Installed on plywood and timber



Our Valued Partners in Success

Buildcorp

KANE

JQZ

ADCO

acciona

hickory

WESTBOURNE

BINAH

tqm
design & construct

TAYLOR

**RICHARD CROOKES
CONSTRUCTIONS**

Fairbrother

DASCO

PARKVIEW