

## Standards

Vertical standards sit on scaffolding jacks. Ledgers, transoms and diagonal braces connect to these standards. The spigot on top enables another standard to be put on top to reach target heights.

| Description             | Finishing                      |
|-------------------------|--------------------------------|
| Standard top (open end) | Paint Green/Hot dip Galvanized |
| Standard 0.5m, WT 4mm   | Paint Green/Hot dip Galvanized |
| Standard 1.0m, WT 4mm   | Paint Green/Hot dip Galvanized |
| Standard 1.5m, WT 4mm   | Paint Green/Hot dip Galvanized |
| Standard 2.0m, WT 4mm   | Paint Green/Hot dip Galvanized |
| Standard 2.5m, WT 4mm   | Paint Green/Hot dip Galvanized |
| Standard 3.0m, WT 4mm   | Paint Green/Hot dip Galvanized |



## Ledgers

Ledgers connect between two standards to give width to scaffold bay.

| Description                  | Finishing                      |
|------------------------------|--------------------------------|
| Ledger 0.5m Ledger, WT 3.2mm | Paint Green/Hot dip Galvanized |
| Ledger 0.7m Ledger, WT 3.2mm | Paint Green/Hot dip Galvanized |
| Ledger 1.2m Ledger, WT 3.2mm | Paint Green/Hot dip Galvanized |
| Ledger 1.8m Ledger, WT 3.2mm | Paint Green/Hot dip Galvanized |
| Ledger 2.4m Ledger, WT 3.2mm | Paint Green/Hot dip Galvanized |
| Ledger 3.0m Ledger, WT 3.2mm | Paint Green/Hot dip Galvanized |



## Transoms

Transoms connect between two standards to give depth to the scaffold bay. The depth of the bay determines how many steel planks can be laid down as a platform for working on.

| Description        | Finishing                      |
|--------------------|--------------------------------|
| Transom 0.48m, 5mm | Paint Green/Hot dip Galvanized |
| Transom 0.51m, 5mm | Paint Green/Hot dip Galvanized |
| Transom 0.7m, 5mm  | Paint Green/Hot dip Galvanized |
| Transom 1.2m, 5mm  | Paint Green/Hot dip Galvanized |
| Transom 1.8m, 5mm  | Paint Green/Hot dip Galvanized |
| Transom 2.4m, 5mm  | Paint Green/Hot dip Galvanized |



## Ladder access transoms

Ladder Access Transoms enable aluminium ladders to be placed within a scaffolding bay.

| Description                | Finishing                      |
|----------------------------|--------------------------------|
| Ladder Access Transom 0.7m | Paint Green/Hot dip Galvanized |
| Ladder Access Transom 1.2m | Paint Green/Hot dip Galvanized |
| Ladder Access Transom 1.8m | Paint Green/Hot dip Galvanized |
| Ladder Access Transom 2.4m | Paint Green/Hot dip Galvanized |



## Diagonal braces

Diagonal braces connect two standards together in a single scaffold bay to provide strength and stability to the bay.

| Description         | Finishing                      |
|---------------------|--------------------------------|
| Diagonal brace 1.7m | Paint Green/Hot dip Galvanized |
| Diagonal brace 2.1m | Paint Green/Hot dip Galvanized |
| Diagonal brace 2.7m | Paint Green/Hot dip Galvanized |
| Diagonal brace 3.2m | Paint Green/Hot dip Galvanized |
| Diagonal brace 3.6m | Paint Green/Hot dip Galvanized |
| Diagonal brace 3.7m | Paint Green/Hot dip Galvanized |



## One board hopup

One board hopup is used when you wish to have a platform that steps out one plank out from the scaffolding bay. Two One Board Hopups are connected to opposing standards in one scaffolding bay, then put steel planks to create an external platform to work on.

Finishing: Paint Green/Hot dip Galvanized



## Two board hopup

Two board hopup is used when you wish to have a platform that steps out two plank width out from the scaffolding bay. Two of Two Board Hopups are connected to opposing standards in one scaffolding bay, and are used with tie bars and steel planks to create an external platform to work on.

Finishing: Paint Green/Hot dip Galvanized



## Three board hopup

Three board hopup is used when you wish to have a platform that steps out three planks width out from the scaffolding bay. Two Three Board Hoppups are connected to opposing standards in one scaffolding bay, and are used with tie bars and steel planks to create an external platform to work on. The spigot allow put standards on top.

Finishing: Paint Green/Hot dip Galvanized



## Tie bars

Tie bars are used to connect two hopup brackets width ways to provide the strength and stability to the hopup platforms created. They also lock in the steel planks being used as the external working platforms.

|              |                                |
|--------------|--------------------------------|
| Tie bar 0.7m | Paint Green/Hot dip Galvanized |
| Tie bar 1.2m | Paint Green/Hot dip Galvanized |
| Tie bar 1.8m | Paint Green/Hot dip Galvanized |
| Tie bar 2.4m | Paint Green/Hot dip Galvanized |
| Tie bar 3.0m | Paint Green/Hot dip Galvanized |





## Steel planks

Steel planks sit inside the scaffolding bay, with each end sitting on the corresponding transom. The plank provides a working platform. The planks are also used to sit on hopups connected to standards. To provide an external working platform.

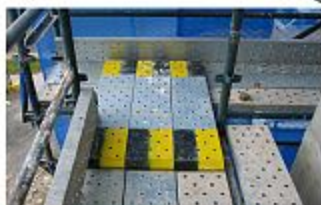
| Description             | Finishing  |
|-------------------------|------------|
| Steel plank 0.7m, 1.8mm | Galvanized |
| Steel plank 1.2m, 1.8mm | Galvanized |
| Steel plank 1.8m, 1.8mm | Galvanized |
| Steel plank 2.4m, 1.8mm | Galvanized |
| Steel plank 3.0m, 1.8mm | Galvanized |



## Steel lap planks

To stop use timber plank, you can choose use steel lap planks. The Australian Design Registration Number is 314979. The thickness is 39mm same as timber

|                        |            |
|------------------------|------------|
| Steel Lap plank 1.2m G | Galvanized |
| Steel Lap plank 1.8m G | Galvanized |



## Bridge plates

Bridge plate is designed to cover the gaps between scaffolding bays. Surface of the bridge plate is checker plate. Bridge plate has two sizes, which cover the gaps of two planks, three planks, four planks and five planks bays through combine use them.

| Description               | Finishing              |
|---------------------------|------------------------|
| Bridge plate for 2 boards | Painte yellow or green |
| Bridge plate for 3 boards | Painte yellow or green |



## Corner bracket

Corner bracket is to fill the gap where two runs of planks platform intersect on an internal corner of the building.

Finishing: Painted green/Galvanised



## Timber planks

Timber scaffolding planks are used in to lap scaffold bays. When you build tube and fittings scaffold, you have to use timber planks. our timber plank complies AS1577, AS2098.2, AS/NZS4357.

Width 230mm

Thickness 39mm

Length: 1.2m, 1.5m, 1.8m, 2.4m, 3.0m, 3.6m



## Solid Screw Jack

Screw jack is used as the base for scaffolding bays, in which standards are put on. Provide stability by adjusting the level of the bay on uneven ground.

Solid jack 650mm high, 500mm adjustable



## Swivel jack

Screw jack is used as the base for scaffolding bays, in which standards are put on slope ground. Provide stability by adjusting the level of the bay on uneven ground.

Solid swivel jack 650mm high, 500mm adjustable



## U head solid jack

Solid U head jacks are used as top or bottom support of scaffold as well as bird cage project. Tested according to AS3610.

Size 650mm, adjust 500mm, Rating 90KN

U head size 100mm and 200mm



## Base pole plate

This product is designed for mainly two functions. One is simply used as base plate at the bottom of standards. The other function is to save you stock haindrail post. You just use this plate to do the job.



## Swivel plate

This product is designed for the base of rack supporting scaffold outriggers. You can use normal standards joint together by small bolts without using long tubes. It save you stock too many items occupying too many space.



## Steel tube

Scaffolding steel tubes are used to build Tube & Fittings Scaffolding. In the normal quickstage scaffold, they are used in conjunction with couplers to brace scaffold bays and formwork bays to various points to give extra stability. Short size tubes are also used to tie scaffold each other and tie the scaffold to the buildings.

Finishing: Galvanised

Wall thickness: 4mm

Stock length: 0.6m, 0.9m, 3.6m, 6.3m



## Right angle coupler

Right angle coupler is to joint two scaffold tubes having O.D. of 48.3mm at Right angles. It complies with requirement of AS 1576.2.



## Swivel coupler

Swivel coupler joint scaffold tube having O.D. 48.3mm at any angle. It typically used for connection bracing members. It also used for tension splicing of the scaffold tubes. Swivel coupler can be used to resist tension or compression loads in bracing. It should not be used to support primary members. Complies with requirement of AS1576.2.



## Toe board clip

Toe boards secured using the toe board clips which locks around the standard with its protruding prong holding the toe board planks in place.

Finishing: Galvanised



## Wall tie bracket

Wall tie brackets are alternative tying method and they are used where it is not possible or convenient to tie through windows or around columns of the buildings.





## Double C clip

Double C clip is used to join two standards closely together for applications such as constructing overhead hoarding support structure.



## Putlog coupler (Pig ear coupler)

Putlog coupler is to join 48.3mm O.D. tubers at right angles. It is used for positioning putlog tubes onto ledger tubes. It complies with requirements of AS1576.2. This putlog coupler typically used for securing guardrails and midrails to standards at right angles. Other uses can distort the coupler so that tube retention is not effective and WLL does not apply. Not to be used for connecting putlog tubes to ledger tube. Only use Right angle coupler for such purpose.



## Putlog coupler with double lug

Putlog coupler with double lug joins 48.3 O.D. scaffold tubes at right angles. It is used for fixing putlog tubes on to ledger tubes. It complies with AS1676.2. This putlog coupler typically used for securing guardrails and midrails at right angles to standards. Other used can distort the couplers so that tube retention is not effective and WLL does not apply. Not to be used for connecting putlog tubes in tube-and-fitting scaffolding.



## Putlog coupler hook type

Putlog coupler hook type joins 48.3mm O.D. scaffold tubes at right angle. Not recommended for fixing of putlog tubes to ledger tubes for working decks.



## Board return coupler

Board return coupler is to retain timber scaffold planks to 48.3mm O.D. putlog/transom tubes



## Girder coupler (Beam coupler)

Girder couplers join 48.3mm O.D. scaffold tube to tapered or parallel flange steel beam at 90 degree. It suitable for girder flange thickness up to 44mm. This product must be used in pair each side of flange.



## Swivel girder coupler

Swivel girder couplers join 48.3mm O.D. scaffold to tapered or parallel flange steel beams at various angles. It suitable for girder flange thickness up to 44mm. This product must be used in pairs each side of the flange.



## Reduction right angle coupler

Reduction right angle coupler joins scaffold tube having 48.3mm O.D. and formwork components having 60mm O. D. at right angles.



## Reduction Swivel coupler

Reduction swivel coupler joins scaffold tube having 48.3 O.D. and formwork components having 60mm O.D. at any angle.



## Hoarding coupler

Hoarding coupler is used to fix plywood in the scaffolding when do scaffold hoarding.



## External Joint (Sleeve) coupler

External coupler is used to connect two ends of scaffold tubes together by joint from outside of the tubes.



## Internal Joint coupler

Internal joint coupler connects two ends of scaffold tubes by joint from inside of the tubes.



## Ladder clip

Ladder access clip is used to fix straight ladder on to scaffold. It stop the ladder moves.



## Half Coupler, bolt & nut

Half coupler is a scaffold coupler component used to make some special product.

T-bolt and nut are used to replace scaffold coupler's bolts and nuts when the coupler is rusted and not able to work.



## End toe board clip

End toe board clip is to put steel plank as toe board at end bays. It put the steel plank outside the scaffold.

Finishing: Paint green & galvanised





## Aluminium ladders

Scaffold ladder is one of the access of scaffolding. Normally, it is used in ladder access bay. Our ladder comply with requirements of AS1892.1.

Maximum working load rate: 150kg

Available sizes: 3.6m, 4.8m, 5.8m



## Stair

Stair enable a stairway to be assembled within a 2.4m bay of scaffold. Each end of the stair is supported by a transom. The width of the unit is half of the bay width enable two units to sit on a transom, thus a continuous staircase can be built up the full height of the scaffold. It comply with AS1576.1

Vertical height of the unit is 1.5m

Material: Steel and aluminium



## Stringer stair

Aluminium Stringer stair replace the traditional steel stringer stair frames. Two stairs bolt together put on 1.2m wide bay make it raise 2m height.



## Step down bracket

Step down bracket is used in the first step at the entrance of the stair case. We supply two type of step down brackets.

Type One: Step down bracket (code 118002)

Type Two: Multi use step down bracket (code 118003)

With two holes, you can also use it as adjustable one board hopup



## Castor wheel

Cast wheel is designed to fit into the bottom of a standard. It features a swivel facility and dual function locking mechanism which locks both the swivel and rolling motion of the castor.

Size: 200mm diameter of the wheel



## Hardwood sole boards

Sole board is put under the scaffolding jack. The function of sole board is to spread the weight of scaffolding. Our standard size of sole board are:

Thickness: 38mm  
width: 225mm  
Length: 400mm, 500mm, 1500mm

We also supply non-standard sizes as per order



## Timber gluts

Timber gluts is used to store steel planks and timber planks at scaffold warehouse. It is hardwood.

Size: 1200X75X50mm



## Steel pallet

Steel pallet is hold scaffold in warehouse or during transport.

Finishing: Painted green & Galvanised



## Scaffolding cage

The Scaffolding cages use used to put small components in storage or mover small components to construction site. There are two types of cages.

Assembling cage: use 5 mesh panels assemble with a stillage.

Fixed cages.

Finishing: Painted green & Galvanized



## Stillage Liner Bag

This bag enables you to convert any old stillage into an effective cage for storing and transporting scaffold fittings. It is an innovative cost saving solution!

When you use this liner bag, ideally, you put some hard steel sheet or plywood at the bottom of the bag.





## Shade cloth

Shade cloth is a simple mesh protection on scaffolding. It has UV protection.

Size: 1.83X50m



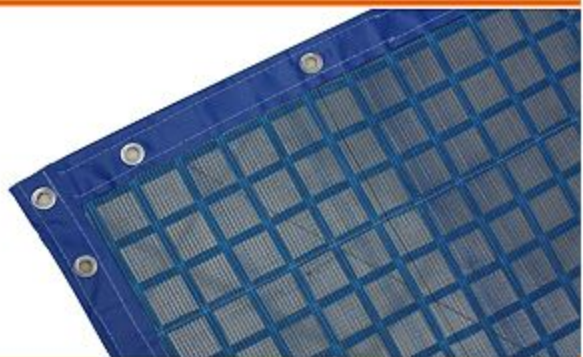
## Lyta mesh

Lyta mesh is a perfect product to replace chain wire + shade cloth on scaffolding. It is easy installation, durable design, fire retardent.

Size: 15mX1m, 15mX1.9m

Colour: Blue, Green

More details refer to page ????



## LYTA Screen

Lyta Screen is designed to be installed using steel tie wire, or heavy duty cable ties to fix the screen onto scaffolding standards, hand-rail ledgers and knee-rail ledgers; Kick boards must be incorporated with Lyta Screen. Normally and preferably, Lyta Screen will be located inside the kick board.

Type: mesh with edge, mesh without edge

Size: 10mX1m

Colour: Black

More details refer to page ????



## KwikAs bucket clips

KwikAs is scaffolding hardware. It is a quick and reusable way of attaching sheeting, screening and netting to scaffold or fencing. It can be used to attach shade cloth, chain wire + shade cloth, Lyta mesh and other meshes to scaffold. Suitable size of steel tube is 48.3mm O.D.

Packing: 500pcs per bucket



### Step 1



### Step 2

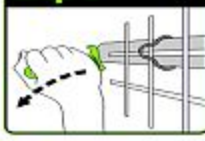


## KwikAs Driver

KwikAs driver used to fit and remove KwikAs clips.



### Step 3



### Remove





## Scaffolding "Danger" Tag

Scaffolding tag size is A3 size. There are four eyelets on the four corners of the tag. It make easy to put anywhere of scaffolding by using tie wire or cable ties.



## Scaffolding "Complete" Tag

Scaffolding tag size is A3 size. There are four eyelets on the four corners of the tag. It make easy to put anywhere of scaffolding by using tie wire or cable ties.

 **Scaffolding**  
**SAFE FOR USE**

**DO NOT ALTER**      **DO NOT OVERLOAD**

Erected by: \_\_\_\_\_ Date Erected: \_\_\_\_\_  
Job/Contract No: \_\_\_\_\_ Expected Removal Date: \_\_\_\_\_  
Scaffold Duty: LIGHT/MEDIUM/HEAVY      Handover Certification by: \_\_\_\_\_

| REINSPECTION |      |           | MODIFICATION |      |           |
|--------------|------|-----------|--------------|------|-----------|
| DATE         | NAME | SIGNATURE | DATE         | NAME | SIGNATURE |
|              |      |           |              |      |           |
|              |      |           |              |      |           |
|              |      |           |              |      |           |

Made by AZL Scaffold & Forework, Sydney Melbourne Brisbane www.azl.com.au

## Aluminium Ladder Beams

Aluminium ladder beams is light weight ladder beams compare to steel beam. The following size of beams available:

- 4m Aluminium Ladder Beam 450mm high
- 6.1m Aluminium Ladder Beam 450mm high
- 8.1m Aluminium Ladder Beam 450mm high
- 6m Aluminium Ladder Beam 750mm high

Spigot can joint two ladder beams.



## Scaffolding Gate

Scaffolding gate is an automatic closing gate. It mainly used in the ladder access to prevent people falling into the hole. But you can use it anywhere you think it should have.



## Trap Door

Trap door is used to cover ladder access gap. When people use the ladder access the scaffold, there is a hole at the ladder place. This trap door is to cover the hole. People can stand on it.



## Adjustable two board hopup

Adjustable two board hopup can be used between bays. The two fittings lock to two ledgers. Ideally, should strengthen the ledgers. It makes the job flexible.



## Kick board

Kick board is used as toe board at the end bay of scaffolding. The available size are 1.2m and 0.7m.



## Tie wire

Tie wire one roll is 95m long. It is used in many area in the construction site.



## Open end standard

The open end standard can be used both normal standards and open end standards by install and remove the spigots showing on the photo.



## Double lock wall tie bracket

Lanotec Release Agent is use in protect formwork plywood, which makes formwork plywood last longer and easier to remove from the concrete. It is made from sheep oil. This material replace use diesel to service jacks and fittings. It reduce environmental Impact.

- Lubrication for jacks & fittings
- Corrosion protection for tubes, jacks & fittings
- Prevention of concrete adhesion
- Mixed at 4:1 reduces lonolin tackness: Low-Tack





**AR-6W**  
Platform 1.3m wide, 2.5m long  
Standing highth: 5-5.5m access 7.5m high

**AR-6N**  
Platform 0.7m wide, 2.5m long  
Standing highth: 5-5.5m access 7.5m high







**AR-6.7W**

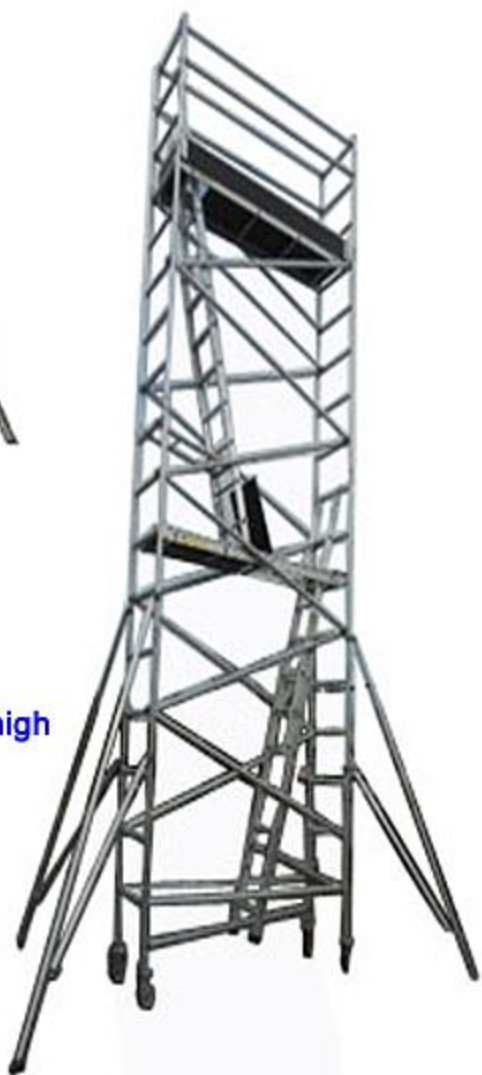
Platform 1.3m wide, 2.5m long

Standing highth: 5-5.5m access 7.5m high

**AR-6N**

Platform 0.7m wide, 2.5m long

Standing highth: 5-5.5m access 7.5m high





**AR-5.4W**

Platform 0.73m wide, 2m long

Standing highth: 4.3m access 6m high

**AR-5.6**

Platform 0.73m wide, 2m long

Standing highth: 5-5.5m access 7.5m high



# Aluminium Mobile Scaffold, Folding style

The folding mobile scaffold system is easy to erect and dismantled. It is easy to carry with small vehicle.



**AR Fold 1**  
Standing high 1-2m high, 0.73m wide, 2m long  
Access 3-4m



**AR Fold + Cage**  
Standing high 2m high, 0.73m wide, 2m long  
Access 4m high



**AR2.3**  
Standing high 3.8m - 4.3m,  
0.73m wide, 2m long  
Access 6m high



**AR2.4**  
Standing high 3.25-3.75m,  
0.73m wide, 2m long  
Access 5.5m high



## Props

Prop inner tube 48.3mm O.D. and outer tube 60.3 O.D. tube. We supply 5 different sizes of props.

|           |             |
|-----------|-------------|
| Size No.0 | 1000-1800mm |
| Size No.1 | 1750-3120mm |
| Size No.2 | 1980-3350mm |
| Size No.3 | 2590-3950mm |
| Size No.4 | 3200-4870mm |



## U head hat

U head hat with spigot is to fit into prop to provide a U shape top, to support two bearers in place.



## Prop pin

One of the easy lost parts of props is the prop pin. We have them in stock for our customer needs.



## Prop nut

Prop nut is also available from us.



## Folding Tripod

This Tripod is prop standing bracket. It is always used as a reinforcement of prop. It can be folded to make transport and storage easy.



## A Shoring Frame system

A Shoring Frame system is a simple formwork slab system. The frames are made from galvanised steel tube. The outside diameter is 60mm. The WLL is 4 tons. Frame width is 1.2m. With cross braces, the system gives about 1.5m span from frame to frame. This system is comply to AS3610.



## Frames

Frame sizes are available as

- 1.8m high
- 1.5m high
- 1.2m high
- 0.9m high



## Cross Braces

Cross braces are light weight tubular crossbrace, used to brace frames and control the distance between frames. Used for both A shoring frames and H frames.



## Hollow jacks

Hollow shoring jack is for the base of the frame with O.D. 48mm

Length 750mm with stop point at 150mm

Hollow shoring U Head Jacks are for the top of the frame system with O.D. 48mm. The U-head jacks are available two sizes.

U-head jacks sizes:

- 750mm with stop point at 150mm
- 1200mm with stop point at 150mm



## Connector (Spigot)

H frame connector spigot made from galvanised steel tube. It is used in conjunction with H frames to vertically conjunction/joint on the frames.



## H Frame system

H Frame system is a simple formwork shoring system. The frames are made from galvanised steel tube. The tested WLL is 4.4 tons per leg when the jacks open at 380mm. Frame width is 1.2m. With cross braces, the system gives about 1.5m span between frames. This system is comply to AS3610.



## Frames

Frame sizes are available as

- 2.1m high
- 1.8m high
- 1.2m high
- 1.0m high



## Cross Braces

Cross braces have three different sizes. They keep the span from frame to frame to be about 1.5m.

- 2.1m cross brace use with 1.8m frame
- 1.7m cross brace use with 1.2m frame
- 1.6m cross brace use with 1.0m frame



## Hollow jacks

Hollow Jack is for the base of the frame. Hollow U Head Jack is for the top of the frame system. Our scaffolding solid jack and U head jacks can also do the same job.



## Connector (Spigot)

H frame connector spigot made from galvanised steel tube. It is used in conjunction with H frames to vertically conjunction/joint on the frames.

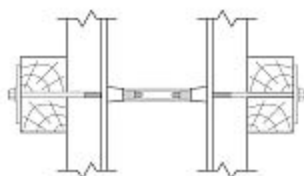




## Coil Ties

Coil Ties are used in conjunction with plastic cones to provide a combined spacer and tying system for wall construction.

It is made from steel. Our Coil Tie sizes are from 150mm to 650mm.



Typical Applications



## Coil Tie Bolts

Our coil tie bolts made from high tensile steel.

Lengths we supply:

250mm  
300mm  
350mm



## Plastic Cones

Coil Tie Cones are made from plastic. The cones are screwed on the coil tie spring.



## Washer/Plate

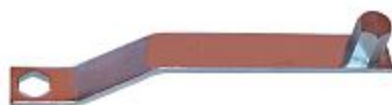
The plate washer is used outside the timber bearings.

Size 125X100X8mm  
100X100X8mm



## Coil Tie Tool

This Coil Tie Tool is used to tighten and remove coil tie bolts and also to remove coil tie cones. It makes the job easier and faster.



## Bar Tie Rod

This hot rod bar is manufactured from high grade steel. The rods need not be cut to be exact each job. The rod is a continuously threaded hot rolled and mill treated bar intended for formwork.



## Wing Nuts

Wing Nuts are used to spin freely on hot rod thread by hand and may be tightened using either an AF spanner or a length of bar.

Wing nuts are cast steel, which have 15mm diameter hole suit to our rods.



## Hexagan Nuts

The longer Hexagan Nuts can be used to joint bars where the greater lengths are required (or for economical use of cut). It remains buried in the concrete.

The shorter hexagan nuts can be used as wing nuts.

The diameter of the holes on the nuts are 15mm. We have Three sizes on height:

- 120mm
- 50mm
- 25mm



## Washers/Plates

We have two Washers/Plates. One is cast steel and the other is steel plate.



## Wing Nut with Plate

Heavy Duty Wing nut with plate is for slight angle of bar application.



## Water Stop Connector

Water Stop Connector is used to provide a water tight seal between the two sides of a concrete wall.



## Steel Cone

Steel Cone is use in bar tie wall system.



## Concrete Anchor

Expansion anchor can be used in concrete and rock in both wet and dry.



## Plastic Fillet

Made from a flexible plastic.

Size:3m/pc or in bundle



## PVC Conduit & Cone

The PVC conduit and plastic cones is to make the spacer at bar tie system.





## Bullet head nails

Bright finish Bullet Head Nails come in 25 Kg and 15 Kg boxes.

Size:

- 30mm X 1.8mm
- 50mm X 2.8mm
- 75mm X 3.75mm



## Long Hammer

Designed to nail in hard to reach places it will hammer all nails up to 75mm long and 6mm diameter and punch them up to 3mm deep. The magnetic barrel hold the nail in the tool so that you can nail up, down or sideways and reach in anywhere you can't swing a hammer.



## Formwork Plywood

Formwork plywood supply in following specifications:

- Size: 2400X1200X17mm
- 1800X1200X17mm

Grade: F17



## LVL Bearer

LVL Bearer size:

Size:

- |          |                 |
|----------|-----------------|
| 95X65mm  | 65 pcs per pack |
| 150X77mm | 35 pcs per pack |

Length: 3.6m, 4.2m, 4.8m, 5.4m, 6.0m



## Form Board

- |                |                 |
|----------------|-----------------|
| Size: 100X36mm | 90 pcs per pack |
| 120X36mm       | 81 pcs per pack |
| 150X36mm       | 63 pcs per pack |
| 170X36mm       | 54 pcs per pack |
| 200X36mm       | 45 pcs per pack |
| 240X36mm       | 36 pcs per pack |
| 300X36mm       | 27 pcs per pack |

Length: 6.0m

